



## Notice of Special Meeting Oceano Community Services District - Board of Directors Agenda

**MONDAY, December 3, 2018 – 1:30 P.M.**

Oceano Community Services District Board Room  
1655 Front Street, Oceano, CA

---

All items on the agenda including information items, may be deliberated. Any member of the public with an interest in one of these items should review the background material and request information on the possible action that could be taken.

All persons desiring to speak during any Public Comment period are asked to fill out a "Board Appearance Form" to submit to the General Manager prior to the start of the meeting. Each individual speaker is limited to a presentation time of THREE (3) minutes per item. Persons wishing to speak on more than one item shall limit his/her remarks to a total of SIX (6) minutes. This time may be allocated between items in one-minute increments up to three minutes. Time limits may not be yielded to or shared with other speakers.

1. **CALL TO ORDER:**
2. **ROLL CALL:**
3. **FLAG SALUTE:**
4. **PUBLIC COMMENT FOR ITEMS NOT ON THE AGENDA:**

*This public comment period provides an opportunity for members of the public to address the Board on matters of interest within the jurisdiction of the District that are not listed on the agenda. If a member of the public wishes to speak at this time, Public comment is limited to three (3) minutes.*

5. **CLOSED SESSION:** None
6. **BUSINESS ITEMS:** Consideration of recommendations to approve the purchase of a replacement motor for Well #8, and by a 4/5ths vote, approve a resolution pursuant to California Public Contract Code 22050 delegating the General Manager the authority to take any directly related and immediate emergency actions and to procure the necessary equipment, services and supplies needed to resume groundwater pumping without giving notice for bids to let contracts
7. **ADJOURNMENT:**

---

This agenda was prepared and posted pursuant to Government Code Section 54956. Agenda is posted at the Oceano Community Services District, 1655 Front Street, Oceano, CA. Agenda and reports can be accessed and downloaded from the Oceano Community Services District website at [www.oceanocsd.org](http://www.oceanocsd.org).

---

**ASSISTANCE FOR THE DISABLED** If you are disabled in any way and need accommodation to participate in the Board meeting, please call the Clerk of the Board at (805) 481-6730 for assistance at least three (3) working days prior to the meeting so necessary arrangements can be made.

**ASISTENCIA A DISCAPACITADO** Si usted está incapacitado de ninguna manera y necesita alojamiento para participar en la reunión de la Junta, por favor llame a la Secretaría de la Junta al (805) 481-6730 para recibir asistencia por lo menos tres (3) días antes de la reunión para que los arreglos necesarios puedan ser hechos.



## Oceano Community Services District

1655 Front Street, P.O. Box 599, Oceano, CA 93475

(805) 481-6730 FAX (805) 481-6836

---

**Date:** December 3, 2018

**To:** Board of Directors

**From:** Paavo Ogren, General Manager

**Subject:** **Agenda Item #6 - Consideration of recommendations to approve the purchase of a replacement motor for Well #8, and by a 4/5ths vote, approve a resolution pursuant to California Public Contract Code 22050 delegating the General Manager the authority to take any directly related and immediate emergency actions and to procure the necessary equipment, services and supplies needed to resume groundwater pumping without giving notice for bids to let contracts.**

### Recommendation

It is recommended that your Board:

- A. Approve the attached quote for a replacement motor for Well #8 in the amount of \$10,044.99, or an equivalent at a lesser cost, and authorize the President to execute the applicable purchase order.
- B. Approve a resolution pursuant to California Public Contract Code 22050 delegating the General Manager the authority to take any directly related and immediate emergency actions and to procure the necessary equipment, services and supplies needed to resume groundwater pumping without giving notice for bids to let contracts.

### Discussion

On Thursday November 29, 2018, the motor for the District's primary production well (No. 8) failed. Staff obtained a quote for a new motor (Attachment "A"). Staff has been seeking additional quotes based on District purchasing policies and anticipated requesting a special meeting to authorize the purchase and installation of the replacement motor prior to your Board's next regular meeting of December 12, 2018.



---

Groundwater pumping operations were transitioned to Wells #4 and #6. On Saturday December 2, 2018 Well #4 failed, with the apparent cause relating to the well shaft and/or bowls. Since Well #6 cannot operate without blending with Well #4, the District is solely reliant on water supply deliveries from the County of San Luis Obispo.

State Water and Lopez Water supplies are available, but both sources are conveyed through the same water delivery infrastructure. As a result, a failure of the Lopez conveyance system would leave the community with only that water which is stored in the District's storage tanks. In that situation, the water in storage would last about 36 - 48 hours and additional emergency measures would be implemented including emergency procurement of equipment, services and supplies to expedite the District's ability to resume groundwater pumping. Other emergency measures would include coordinating reverse 911 calls to residents and businesses through the County's emergency operations.

At this time, authorizing the purchase of the replacement motor for well #8 is the most immediate action needed to re-establish the ability to pump groundwater. Sole reliance on a single system of infrastructure at this time also warrants consideration of a resolution approving, pursuant to Public Contracts Code Section 22050, the emergency replacement of equipment and facilities necessary for the District to resume groundwater pumping capabilities.

### **Other Agency Involvement**

Staff informed the County of San Luis Obispo, Department of Public Works, of the well failure and our increased reliance on surface water deliveries until Well #8 is repaired.

Staff will contact the County Office of Emergency Services in the event of any failure of water supply deliveries from the County.

### **Other Financial Considerations**

The Board's authorization to purchase the replacement motor for well #8 is needed because it exceeds the General Manager's purchasing authority. Total costs are estimated at under \$15,000 and no budget adjustments are needed at this time.

### **Results**

Approval of the motor replacement for well #8 is necessary to ensure the District's ability to meet drinking water needs and promotes a healthy community. Delaying repairs will place the community at unnecessary risk. Considering an emergency declaration also supports additional action



## Oceano Community Services District

Board of Directors Meeting

---

in the event that the replacement of the motor for well #8 and resuming groundwater pumping encounters unforeseen delays.

### Attachments:

- "A" - Quote and specifications for replacing Well #8 motor.
- Resolution

# Estimate



**ELECTRIC MOTORS & CONTROLS**  
 414 S. Western Ave.  
 Santa Maria, CA 93458  
 (805) 925-8761 FAX: (805) 925-8762

Date	Estimate #
11/29/2018	10098

Name / Address
OCEANO COMMUNITY SERVICES DISTRICT P.O. BOX 599 OCEANO, CA 93445

Job No.	Project

Description	Qty	Cost	Total
125HP 1800RPM 405TP WPI 3PH 460V US MOTOR FREIGHT CA  **** REWIND ON THIS MOTOR COULD BE ANYWHERE BETWEEN \$4,500 - 6,000 ****	1	9,322.50	9,322.50T
<b>Subtotal</b>			\$9,322.50

Phone # 805-925-8761  
 Fax # 805-925-8762  
 sheila\_salters@perryselectric.com

<b>Sales Tax (7.75%)</b>	\$722.49
--------------------------	----------

Thank-you for the opportunity to quote! Quote is good for 30 days from date above.

<b>Total</b>	\$10,044.99
--------------	-------------

# NIDEC MOTOR CORPORATION

8050 WEST FLORISSANT AVE.  
ST. LOUIS, MO 63136



**DATE:** 11/29/2018

**P.O. NO.:** FE01  
**Order/Line NO.:** 23420 MN 100

**TO:**

**Model Number:** FE01  
**Catalog Number:** HO125P2SLGX  
VHS Weather Protected  
CONF,MOTOR,VHS WPI

**REVISIONS:**  
(NONE)

**ALL DOCUMENTS HEREIN ARE CONSIDERED CERTIFIED BY NIDEC MOTOR CORPORATION.  
THANK YOU FOR YOUR ORDER AND THE OPPORTUNITY TO SERVE YOU.**

**Features:**

Horsepower ..... 00125.00~00000.00 ~ KW: 93.25  
Enclosure ..... WPI  
Poles ..... 04~00 ~ RPM: 1800~0  
Frame Size ..... 405~TP  
Phase/Frequency/Voltage.. 3~060~460 ~ Random Wound  
Service Factor ..... 1.15  
Insulation Class ..... Class "F" ~ Insulife 1000  
Altitude In Feet (Max) .. 3300 Ft.(1000 M) ~ +40 C  
Efficiency Class ..... Premium Efficiency  
Application ..... Unknown  
Customer Part Number ....  
16.5" Base ~ Coupling Size: 1-1/2" Bore, 3/8" Key  
Non-Reverse Ratchet ~ Steady Bushing Not Requested  
Pricebook Thrust Value (lbs).. 6700  
Customer Down Thrust (lbs) ... 271  
Customer Shutoff Thrust (lbs).  
Up Thrust (lbs): ~  
Temperature Rise (Sine Wave): "F" Rise @ SF (Resist)  
Starting Method ..... PWS (Dual Volt-Low Volt Only)  
Duty Cycle ..... Continuous Duty  
Load Inertia (lb-ft<sup>2</sup>): NEMA ~ NEMA Inertia: 542.00 ~ 1.00  
Number Of Starts Per Hour: NEMA  
Motor Type Code ..... RUS  
Rotor Inertia (LB-FT<sup>2</sup>) ..... 19.6 LB-FT<sup>2</sup>  
Qty. of Bearings PE (Shaft) ..... 1  
Qty. of Bearings SE (OPP) ..... 2  
Bearing Number PE (Shaft) ..... 6212-J  
Bearing Number SE (OPP) ..... 7222 BECBM

Nidec trademarks followed by the ® symbol are registered with the U.S. Patent and Trademark Office.

# NIDEC MOTOR CORPORATION

8050 WEST FLORISSANT AVE.  
ST. LOUIS, MO 63136



**DATE:** 11/29/2018

**P.O. NO.:** FE01  
**Order/Line NO.:** 23420 MN 100

**TO:**

**Model Number:** FE01  
**Catalog Number:** HO125P2SLGX  
VHS Weather Protected  
CONF,MOTOR,VHS WPI

**REVISIONS:**  
(NONE)

**ALL DOCUMENTS HEREIN ARE CONSIDERED CERTIFIED BY NIDEC MOTOR CORPORATION.  
THANK YOU FOR YOUR ORDER AND THE OPPORTUNITY TO SERVE YOU.**

**Accessories:**

Counter CW Rotation FODE  
175 % Extra High Thrust  
115 Volt Space Heaters  
Special Balance  
Standard Leadtime: 7-8 WEEKS  
Est. Weight (lbs ea): 1200 ~ F.O.B.: Monterrey, Mexico

**USE THE DATA PROVIDED BELOW TO SELECT THE APPROPRIATE DIMENSION PRINT**

<b>Horsepower</b>	125
<b>Pole(s)</b>	04
<b>Voltage(s)</b>	460
<b>Frame Size</b>	405TP
<b>Outlet Box AF</b>	3.38
<b>Outlet Box AA</b>	3.00

Nidec trademarks followed by the ® symbol are registered with the U.S. Patent and Trademark Office.

EFFECTIVE:  
02-MAR-11

# VERTICAL MOTORS

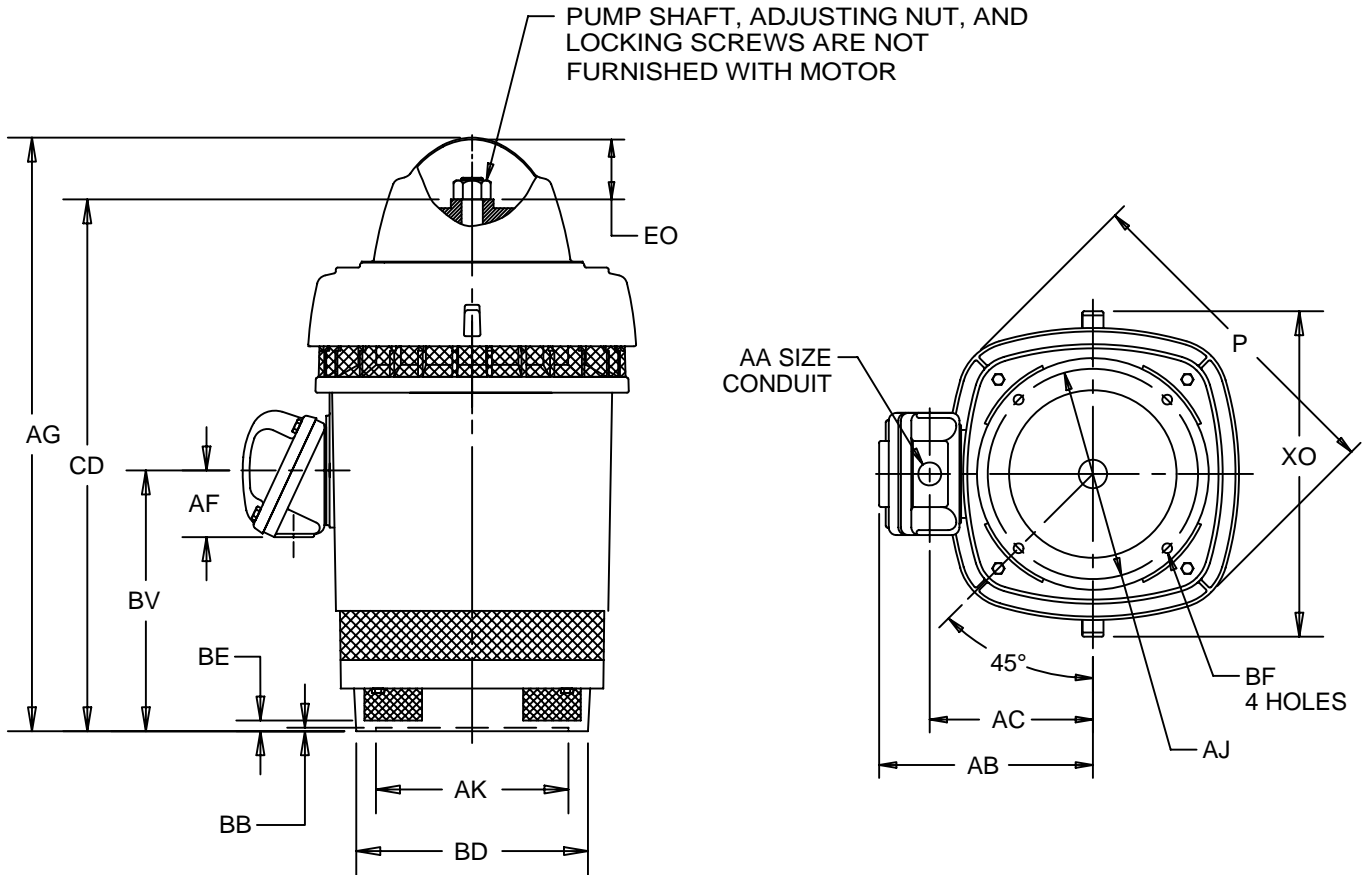
WEATHER PROTECTED TYPE I

PRINT:  
09-2293

SUPERSEDES:  
31-JUL-03

FRAME: 404, 405TP, TPA  
TYPE: RU, RUE, RUI, RUS

SHEET:  
1 OF 1



DIMENSIONS ARE IN INCHES AND MILLIMETERS

UNITS	P <sup>2</sup>	AG	AJ	AK +.005	BB MIN	BE	BF	BV	CD	EO	XO
IN	23.75	42.69	14.750	13.500	.25	.75	.69	18.13	36.94	5.50	24.13
MM	603	1084	374.65	342.90	6	19	18	461	938	140	613

FRAME	CONDUIT BOX MATERIAL	UNITS	AA	AB	AC	AF
400	STEEL	IN	3.00	16.97	12.69	3.38
		MM		431	322	86
	CAST IRON	IN	3 NPT	17.75	13.38	4.63
		MM		451	340	118

FRAME	UNITS	BD MAX
404, 405TP	IN	16.50
	MM	419
404, 405TPA	IN	20.00
	MM	508

- 1: ALL ROUGH DIMENSIONS MAY VARY BY .25" DUE TO CASTING AND/OR FABRICATION VARIATIONS.
- 2: LARGEST MOTOR WIDTH.
- 3: TOLERANCES SHOWN ARE IN INCHES ONLY.
- 4: CONDUIT BOX OPENING MAY BE LOCATED IN STEPS OF 90° REGARDLESS OF LOCATION. STANDARD AS SHOWN WITH CONDUIT OPENING DOWN.

TOLERANCES	
FACE RUNOUT	.007 T.I.R.
PERMISSIBLE ECCENTRICITY OF MOUNTING RABBET	.007 T.I.R.

09-2293/B

**Nidec Motor Corporation**  
St. Louis, Missouri

INFORMATION DISCLOSED ON THIS DOCUMENT IS CONSIDERED PROPRIETARY AND SHALL NOT BE REPRODUCED OR DISCLOSED WITHOUT THE WRITTEN CONSENT OF NIDEC MOTOR CORPORATION



ISSUED BY  
**R. KING**  
APPROVED BY  
**M. TREJO**

IHP\_DP\_NMCA (MAR-2011) SOLIDEDGE



# NAMEPLATE DATA

CATALOG NUMBER:	HO125P2SLGX	NAMEPLATE PART #:	422703-007	
MODEL	FE01	FR	405TP	
SHAFT END BRG	6212-J - QTY 1		OPP END BRG	7222 BECBM - QTY 2
PH	3	MAX AMB	40 C	
INSUL CLASS	F	Asm. Pos.		
		DUTY	CONT	
HP	125	RPM	1785	
VOLTS	460			
FL AMPS	143.0			
SF AMPS	164.0			
SF	1.15	DESIGN	B	
		CODE	G	
NEMA NOM EFFICIENCY	95.4	NOM PF	86.8	
GUARANTEED EFFICIENCY	94.5	MAX KVAR	25.7	
		HZ	60	

**HAZARDOUS LOCATION DATA (IF APPLICABLE):**

DIVISION		CLASS I		GROUP I	
TEMP CODE		CLASS II		GROUP II	

**VFD DATA (IF APPLICABLE):**

VOLTS			
AMPS			
TORQUE 1		TORQUE 2	
VFD LOAD TYPE 1		VFD LOAD TYPE 2	
VFD HERTZ RANGE 1		VFD HERTZ RANGE 2	
VFD SPEED RANGE 1		VFD SPEED RANGE 2	
SERVICE FACTOR		FL SLIP	
NO. POLES	4	MAGNETIZING AMPS	37.9
VECTOR MAX RPM		Encoder PPR	
Radians / Seconds		Encoder Volts	

**TEAO DATA (IF APPLICABLE):**

HP (AIR OVER)		HP (AIR OVER M/S)		RPM (AIR OVER)		RPM (AIR OVER M/S)	
FPM AIR VELOCITY		FPM AIR VELOCITY M/S		FPM AIR VELOCITY SEC			

**ADDITIONAL NAMEPLATE DATA:**

Decal / Plate	WD=165975,CP=132839	Customer PN	
Notes		Non Rev Ratchet	NRR
Max Temp Rise		OPP/Upper Oil Cap	5 QT/4.7 L
Thermal (WDG)		SHAFT/Lower Oil Cap	GREASE
Altitude		Usable At	
Regulatory Notes		Regulatory Compliance	
COS		Marine Duty	
Balance	0.08 IN/SEC	Arctic Duty	
3/4 Load Eff.	95.2	Inrush Limit	
Motor Weight (LBS)	1200	Direction of Rotation	
Sound Level		Special Note 1	
Vertical Thrust (LBS)	6700	Special Note 2	
Thrust Percentage	175% EHT	Special Note 3	
Bearing Life		Special Note 4	
Starting Method		Special Note 5	
Number of Starts		Special Note 6	
200/208V 60Hz Max Amps		SH Max. Temp.	
190V 50 hz Max Amps		SH Voltage	SH VOLTS=115V
380V 50 Hz Max Amps		SH Watts	SH WATTS=144W
NEMA Inertia		Load Inertia	
Sumpheater Voltage		Sumpheater Wattage	
Special Accessory Note 1		Special Accessory Note 16	
Special Accessory Note 2		Special Accessory Note 17	
Special Accessory Note 3		Special Accessory Note 18	
Special Accessory Note 4		Special Accessory Note 19	
Special Accessory Note 5		Special Accessory Note 20	
Special Accessory Note 6		Special Accessory Note 21	
Special Accessory Note 7		Special Accessory Note 22	
Special Accessory Note 8		Special Accessory Note 23	
Special Accessory Note 9		Special Accessory Note 24	
Special Accessory Note 10		Special Accessory Note 25	
Special Accessory Note 11		Special Accessory Note 26	
Special Accessory Note 12		Special Accessory Note 27	
Special Accessory Note 13		Special Accessory Note 28	
Special Accessory Note 14		Special Accessory Note 29	
Special Accessory Note 15		Special Accessory Note 30	
Heater in C/B Voltage		Heater in C/B Watts	
Zone 2 Group		Division 2 Service Factor	
Note 1		Note 2	
Note 3			

**NIDEC MOTOR CORPORATION  
ST. LOUIS, MO**



TYPICAL NAMEPLATE DATA  
ACTUAL MOTOR NAMEPLATE LAYOUT MAY VARY  
SOME FIELDS MAY BE OMITTED

Nidec trademarks followed by the ® symbol are registered with the U.S. Patent and Trademark Office.

## MOTOR PERFORMANCE

MODEL NO.	CATALOG NO.	PHASE	TYPE	FRAME
FE01	HO125P2SLGX	3	RUS	405TP
ORDER NO.		23420		LINE NO.
MPI:				183841
HP:				125
POLES:				4
VOLTS:				460
HZ:				60
SERVICE FACTOR:				1.15
EFFICIENCY (%):				
S.F.			94.5	
FULL			94.5	
3/4			95.2	
1/2			94.7	
1/4			91.8	
POWER FACTOR (%):				
S.F.			86.8	
FULL			86.8	
3/4			85.3	
1/2			79.9	
1/4			62.3	
NO LOAD			6	
LOCKED ROTOR			32.5	
AMPS:				
S.F.			164	
FULL			143	
3/4			108	
1/2			77	
1/4			51	
NO LOAD			37.9	
LOCKED ROTOR			925.1	
NEMA CODE LETTER				G
NEMA DESIGN LETTER				B
FULL LOAD RPM				1785
NEMA NOMINAL / EFFICIENCY (%)				95.4
GUARANTEED EFFICIENCY (%)				94.5
MAX KVAR				25.7
AMBIENT (°C)				40
ALTITUDE (FASL)				3300
SAFE STALL TIME-HOT (SEC)				20
SOUND PRESSURE (DBA @ 1M)				70
TORQUES:				
BREAKDOWN{% F.L.}			231	
LOCKED ROTOR{% F.L.}			186	
FULL LOAD{LB-FT}			368.1	

NEMA Nominal and Guaranteed Efficiencies are up to 3,300 feet above sea level and 25 ° C ambient

The Above Data Is Typical, Sinewave Power Unless Noted Otherwise

**NIDEC MOTOR CORPORATION**  
ST. LOUIS, MO



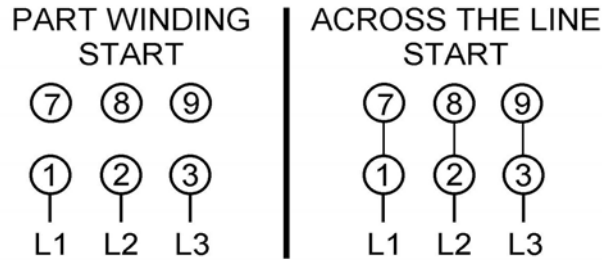
Nidec trademarks followed by the ® symbol are registered with the U.S. Patent and Trademark Office.



165975

**Motor Wiring Diagram**

Single Voltage, Wye or Delta Connection Part Winding Start (PWS)  
Or  
Full Winding – Across the Line Start



EACH LEAD MAY CONSIST OF ONE OR MORE CABLES HAVING THE SAME LEAD NUMBER.

Per NEMA MG1 1998-1.75, "A Part-winding Start motor is one which certain specially designed circuits of each phase of the primary winding are initially connected to the supply line. The remaining circuit or circuits of each phase are connected to the supply in parallel with initially connected circuits, at a predetermined point in the starting operation." This is intended to limit the inrush current required to start the motor. NEMA MG1 1998-14.38 states that the motor may not accelerate to full speed in part-winding and may be noisier than when on full winding.

Motors designed by US Motors for Part-winding Start also be used for across the line starting using only the full winding connection. Damage will occur if the motor is operated with load for more than 2 seconds on Part-winding without transition to full winding.

To reverse direction of rotation, interchange leads L1 & L2.

Each lead may have one or more cables comprising that lead. In such case, each cable will be marked with the appropriate lead number.



165975

## **SPECIAL INFORMATION REGARDING PART WINDING STARTING**

This motor is not designed to fully accelerate when started with the part winding start connection shown on the motor connection diagram. In order to avoid damaging the motor when it is started with the part winding start connection, set timers so that the motor starter switches the motor connection from start to run within two seconds from the time that the motor is initially energized. The motor is not expected to fully accelerate before the motor connection is switched to run, but the momentary operation on the start connection should allow time for automatic voltage regulators on the power system to compensate for voltage dip resulting from the high current draw of the motor during acceleration. Thus, voltage dip in the power system will be minimized through proper use of the part winding start connection. Once the motor has been switched over to the run connection, it will finish accelerating up to full speed.

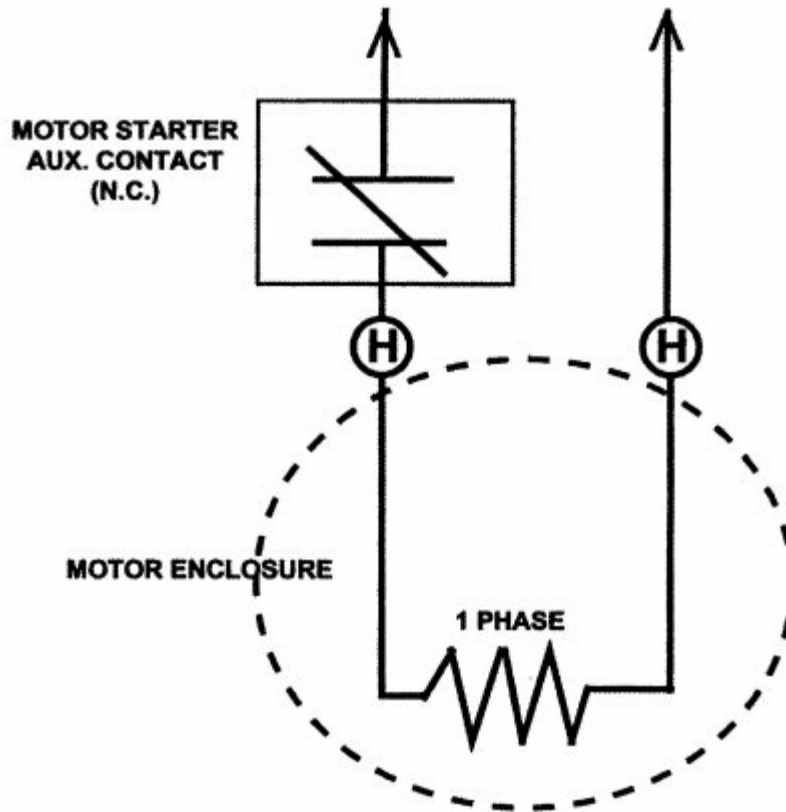
During the time that the motor is operated on the part winding start connection, it is expected that the motor may be noisier than when operated on the run connection and it is also expected that the line amp unbalance between phases may be approximately 100% to 150%. This is due to the adverse effect of harmonics that result from the unbalanced magnetic circuit on the part winding start connection.

For further information regarding characteristics of polyphase induction motors when operated on a part winding start connection, refer to NEMA Publication MG 1-1998 Part 14.38.



# SPACE HEATER CONNECTION DIAGRAM

SPACE HEATER LEADS MAY BE LOCATED IN EITHER THE MAIN OUTLET BOX OR IF SO EQUIPPED, AN AUXILIARY BOX



THIS EQUIPMENT IS SUPPLIED WITH ANTI-CONDENSATION HEATERS. HEATERS SHOULD BE ENERGIZED WHEN EQUIPMENT IS NOT OPERATING TO PROTECT UNIT BY PREVENTING INTERNAL CONDENSATION. CONNECT THE "H" OR HEATER LEADS TO

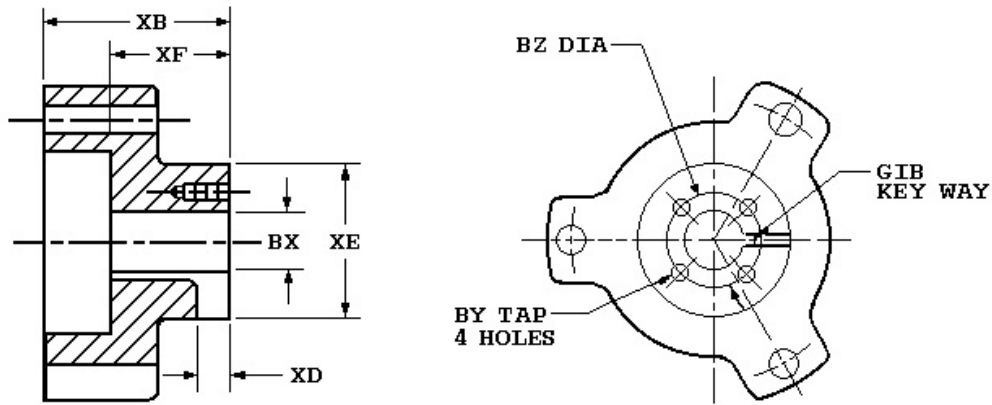
<b>115V</b> VOLTS	<b>144W</b> WATTS RATING
-------------------	--------------------------

## SPACE HEATER NAMEPLATE (ON MOTOR)

Revision: 7/30/2008  
Mike Cullen

# Vertical HOLLOSHAFT Coupling Dimensions

## Standard Coupling Dimensions



Coupling Part Number	133003
BX Nominal	1 1/2
Actual Bore	1.501
BY	1/4-20
BZ	2 1/8
XB	3 13/32
XD	17/32
XE	3 1/8
XF	2 13/32
SQ. KEY	3/8

### Notes:

1. All Rough casting dimensions may vary by 0.25" due to casting variations.
2. All tapped holes are Unified National Course, Right Hand thread.
3. Coupling bore dimension "BX" is machined with a tolerance of  $-.000"$ ,  $+.001"$  up to 1.50" bore inclusive. Larger bores:  $-.000"$ ,  $+.002"$ .



Copyright © 2010 Nidec Motor Corporation. All rights reserved.

## TYPICAL REED CRITICAL FREQUENCY DATA

Note: Motor RCF Test Data can be provided at time of motor shipment through special test.  
Please contact your Nidec Motor Corporation representative for more information.

MODEL NO: FE01  
CATALOG NO: HO125P2SLGX

Frame: 405TP Type: RUS

REED CRITICAL FREQUENCY:	46	HZ
CENTER OF GRAVITY:	18	IN
DEFLECTION @ CENTER OF GRAVITY:	0.0046	IN
UNIT WEIGHT:	1100	LBS
BASE DIAMETER:	ALL	IN
TOLERANCE ON RCF VALUE:	10%	
DATE:	11/29/2018	



Copyright © 2010 Nidec Motor Corporation. All rights reserved.



**OCEANO COMMUNITY SERVICES DISTRICT  
RESOLUTION NO: 2018 - \_\_**

**A RESOLUTION PURSUANT TO CALIFORNIA PUBLIC CONTRACT CODE 22050  
DELEGATING TO THE GENERAL MANAGER THE AUTHORITY TO TAKE ANY  
DIRECTLY RELATED AND IMMEDIATE EMERGENCY ACTIONS AND TO PROCURE  
THE NECESSARY EQUIPMENT, SERVICES, AND SUPPLIES NEEDED TO RESUME  
GROUNDWATER PUMPING WITHOUT GIVING NOTICE FOR BIDS TO LET  
CONTRACTS**

**WHEREAS**, on November 29, 2018, the District's Well #8, which is the District's primary groundwater pumping well, failed; and,

**WHEREAS**, in response to the unexpected failure of the Well #8, District staff immediately embarked on efforts to identify actions that would be needed to resume the ability to pump with Well #8; and,

**WHEREAS**, on November 29, 2018, the District's Utility Operator and electrician visited Well #8 to assess the cause of the well failure and identified what appeared to be a failed motor; and,

**WHEREAS**, the District transitioned groundwater pumping to Wells #4 and #6, which are operated in unison for water quality reasons but on December 1, 2018, Well #4 failed; and

**WHEREAS**, the failure of the District's Well #8 and Well #4 represents a sudden unexpected occurrence demanding immediate action to resume the ability to pump groundwater and to prevent or mitigate loss or damage to life, health, property or essential public services; and

**WHEREAS**, the District's inability to pump groundwater requires direct and immediate emergency actions to prevent and mitigate loss of essential public services including potable water service necessary for health and well being, and water that is needed for fire and emergency services to protect life and property; and

**WHEREAS**, the District's estimated cost of the emergency project is less than \$15,000 and the District may utilized provisions of the Uniform Public Construction Cost Accounting Act, which are incorporated in California Public Contract Code 22000 et seq. to procure the necessary equipment, services, and supplies for replacement of the wells; and

**WHEREAS**, California Public Contract Code 22050 (a) authorizes a public agency to take any directly related and immediate action required to replace a public facility in the case of an emergency and to procure the necessary equipment, services, and supplies for those purposes, without giving notice for bids to let contracts provided that the governing board of the public agency finds that, based on substantial evidence, that the emergency will not permit a delay resulting from a competitive solicitation

of bids and that the action is necessary to respond to the emergency in the event that costs to resume groundwater pumping exceeds current estimates; and

**WHEREAS**, California Public Contract Code 22050 (b) authorizes the governing body of a public agency to delegate to the District's General Manager the authority to order any action to replace the public facility as authorized by Public Contract Code 22050 (a); and

**WHEREAS**, the time required to obtain to competitive bids will unduly delay the District's ability to resume groundwater pumping in the event that the replacement of the motor for Well #8 is insufficient to resume groundwater pumping; and

**WHEREAS**, serving the public interest demand immediate action to prevent and mitigate loss of essential public services including potable water service necessary for health and well being, and water that is needed for fire and emergency services to protect life and property as a result of the sudden unexpected failure of the District's Well #8 and #4 and the District's inability to pump groundwater.

**NOW, THEREFORE, BE IT RESOLVED** by the Board of Directors of the Oceano Community Services District that:

1. The foregoing recitals are true and correct.
2. That the failure of Well #8 and #4 was a sudden and unexpected failure.
3. The District's emergency actions to re-establish the ability to pump groundwater is necessary to prevent or mitigate loss or damage to life, health, property or essential public services, including but not limited to the following:
  - a. Potable water service and water service for fire flows to the District's customers.
4. Pursuant to Public Contract Code 22050 (a), substantial evidence supports the conclusions that the need for emergency actions cannot be delayed, that the District has and must continue to act as expeditiously as possible to resume the ability to pump groundwater and delays resulting from a competitive solicitation of bids will unduly impact the need to prevent or mitigate loss or damage to life, health, property or essential public services.
5. Pursuant to Public Contract Code 22050 (b), the District General Manager is authorized to take any directly related and immediate action required to re-establish the District's ability to pump groundwater and to procure the necessary equipment, services, and supplies for those purposes, without giving notice for bids to let contracts.
6. Pursuant to Public Contract Code 22050 (b), this resolution must be approved by at least of 4/5ths vote.

7. Pursuant to Public Contract Code 22050 c), the General Manager shall report to the Board of Directors at each subsequent regular meeting so that the Board can review the emergency action to determine, by a 4/5ths vote, that there is a need to continue the emergency action.

**PASSED AND ADOPTED** by the Board of Directors of the Oceano Community Services District on December 3, 2018 by the following vote:

**AYES:**  
**NOES:**  
**ABSTAIN:**  
**ABSENT:**

---

President, Board of Directors  
of the Oceano Community Services District

**ATTEST:**

---

Board Secretary of the  
Oceano Community Services

**APPROVED AS TO FORM:**

---

Jeffrey A. Minnery, District Counsel