

**OCEANO COMMUNITY SERVICES DISTRICT  
ADDENDUM NO. 1 TO  
OCEANO DRAINAGE UTILITY RELOCATION PROJECT  
OCEANO, CA  
CONTRACT NO. 2019-02**

**The final day, time and location for submittal of Bid Proposal has changed:**

**Date / Time: Thursday, April 4, 2019 at 3:00 p.m.**

Certain revisions are hereby incorporated into the Contract Documents for the subject project. These revisions are as follows:

---

The Section titled "Notice Inviting Bids" is hereby amended as follows:

1. The time and date for receiving bids shall be **Thursday, April 4, 2019 at 3:00** p.m. local time.
  2. Under "Notice Pursuant to the Uniform Public Construction Cost Accounting Act (Act)", the second sentence should read, "**The District Engineer's estimate for the scope of work is \$74,635.**"
- 

The Section titled "Instructions to Bidders" is hereby amended as follows:

3. Replace "**20. BASIS OF AWARD; BALANCED BID**" with the following:

"The District will award the Contract to the responsible bidder that submits the lowest responsive "GRAND TOTAL BASE BID" (total of Base Bid Items 1-4 as shown on "Bid Form – Bid Item List") which shall be determined as set forth in the Notice to Bidders and as provided in these Instructions to Bidders and subject to the rights reserved by the District."

---

The Section titled "Bid Forms" is hereby amended as follows:

4. Replace "Bid Form – Bid Item List" with the Bid Item List attached to this addendum. Revisions include the following:
  - a. "Base Bid" Item No. 2 "Railroad Street 6" Sewer Modification" is to be removed from the "Base Bid" section and added to the "Additive Bid Item 1" section.

---

The Section titled “Exhibit D” is hereby amended as follows:

5. Replace project plans (Sheets 1-4) with the new sheets 1-4 attached to this addendum. Revisions include, but are not limited to the following:
  - a. Sheet 1 of 4: The signature on the title sheet is dated February 5, 2018. The previous set was dated October 20, 2016.
  - b. Sheets 1-4: The date in the title block of each drawing is shown as 01/19/2018. The previous set showed a date of 09/07/2016.
  - c. Sheet 3 of 4: The installation of a new sewer manhole and the lowering of the portion of line between the new manhole and the existing downstream manhole has been removed from the base bid of this project. This work (shown in a revision cloud in both the plan and profile views) shall be included in the project bid schedule as “Bid Additive #1”.
  - d. Sheet 4 of 4:
    - i. “15<sup>th</sup> Street Waterline Relocation – Plan View” has been modified to include a new gate valve.
    - ii. “Paso Robles Street Waterline Relocation – Plan View” has been modified:
      1. The note stating “RELOCATE WATERLINE PER DETAIL 3, SHEET 2.” has been removed.
      2. A new note stating “RELOCATE WATERLINE PER DETAIL 2, SHEET 2.” has been added.
      3. “VALVE ANCHOR & BOX” (Drawing No. W-3 of SLO County Department of Public Works & Transportation) has been added.
      4. “ENCASEMENT DETAIL” has been added.

- 
6. Replace Section 2.03 “WORK SEQUENCING” (Page D-15) with the following:

### **2.03 WORK SEQUENCING**

Work shall be sequenced in conformance with section 10-1.02 of the 2015 Caltrans Standard Specifications, the 2015 Caltrans Revised Standard Specifications, and these Technical Specifications.

Section 10-1.02A of the 2015 Caltrans Standard Specifications shall be replaced with the following:

Contractor shall review the applicable sections of the Environmental Permit Summary Form (Exhibit G-1 of this bid package) in preparation of project work sequencing. Elements within this document, such as the nest bird season, may limit availability to perform work during specific times of the year and shall be compensated for in the project schedule to minimize project delays. Additionally, the Contractor is responsible for obtaining Encroachment Permits from SLO County and Caltrans. The District has included their Caltrans Encroachment Permit for this project for reference as Exhibit G-2). Conditions required of the Contractor as part of the County’s Encroachment Permit will include, but not be limited to:

- A. Compliance with the Environmental Permit Summary for the County's "Oceano Drainage Improvement Project" (Contract No. 300465.08.02).
- B. Requirements for road reconstruction and/or patching in areas of work within the County Right-of-Way will be determined, in part, by the Pavement Condition Index (PCI) as shown in the County of San Luis Obispo Department of Public Works and Transportation "2015 Pavement Management Report with 2018 Addendum". The relevant streets included in this project are listed below with the tabulated values provided in the above-reference report:

Street ID	Road Name	Beg. Loc.	End. Loc.	PCI Inspection Date	PCI	Functional Class	Surface Type
1100	Railroad Street-1100	Hwy. 1	Pershing Dr.	6/22/2016	38	Residential/Local	A-AC
1111	Fifteenth Street - 1111	Ocean St. (@Hwy. 1)	Wilmar Ave.	6/21/2016	55	Residential/Local	A-AC
1125	Paso Robles Street - 1125	Hwy. 1	Elm Street	6/21/2016	100	Collector	A-AC

Declaration of Responsible Charge

I hereby declare that I am the Engineer of Record for this project and that I have exercised responsible charge over the project as defined in Section 6703 of the Business and Professions Code. These plans and specifications, to the best of my knowledge, comply with the current standards.

Any errors, omissions, or other violations of those ordinances, standards or design criteria encountered during construction shall be corrected and such corrections reflected on corrected plans.

---

L. Alberto Lopez

R.C.E 67602



**BID FORM - BID ITEM LIST**

**BASE BID**

ITEM NO.	DESCRIPTION OF ITEM	APPROX. QUANTITY	UNIT OF MEASURE	UNIT PRICE (IN FIGURES) DOLLARS.CENTS	TOTAL AMOUNT DOLLARS. CENTS
1	SR-1 STA 10+90 12" WATERLINE MODIFICATION	1	LS		
2	15TH STREET STA 13+85 12" WATERLINE MODIFICATION	1	LS		
3	PASO ROBLES STREET STA 10+15 6" WATERLINE MODIFICATION	1	LS		
4	RAILROAD STREET STA 13+45 6" WATERLINE MODIFICATION	1	LS		
<b>GRAND TOTAL BASE BID</b>					

***ADDITIVE BID ITEM 1***

ITEM NO.	DESCRIPTION OF ITEM	APPROX. QUANTITY	UNIT OF MEASURE	UNIT PRICE (IN FIGURES) DOLLARS.CENTS	TOTAL AMOUNT DOLLARS. CENTS
1	RAILROAD STREET 6" SEWER MODIFICATION	1	LS		
<b>TOTAL ADDITIVE BID ITEM 1</b>					

**GRAND TOTAL BASE BID PLUS ADDITIVE BID ITEMS**

Name of bidder \_\_\_\_\_

Signature of bidder \_\_\_\_\_

Printed Name and Title \_\_\_\_\_

Date \_\_\_\_\_

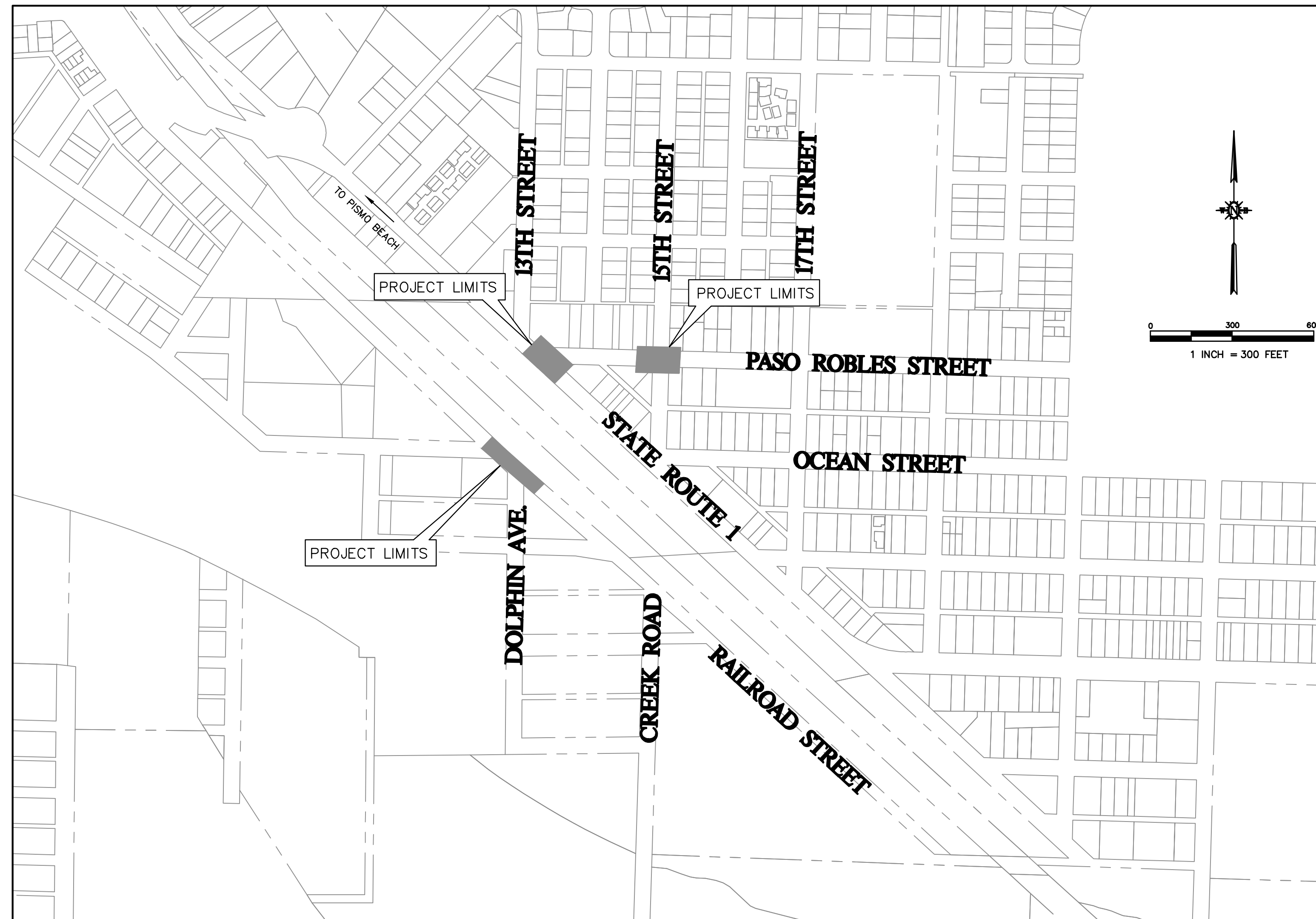
# OCEANO COMMUNITY SERVICES DISTRICT OCEANO DRAINAGE IMPROVEMENTS OCEANO, CA

### SHEET INDEX

SHEET 1	TITLE SHEET
SHEET 2	PLAN AND PROFILE
SHEET 3	PLAN AND PROFILE
SHEET 4	RELOCATIONS

### LEGEND

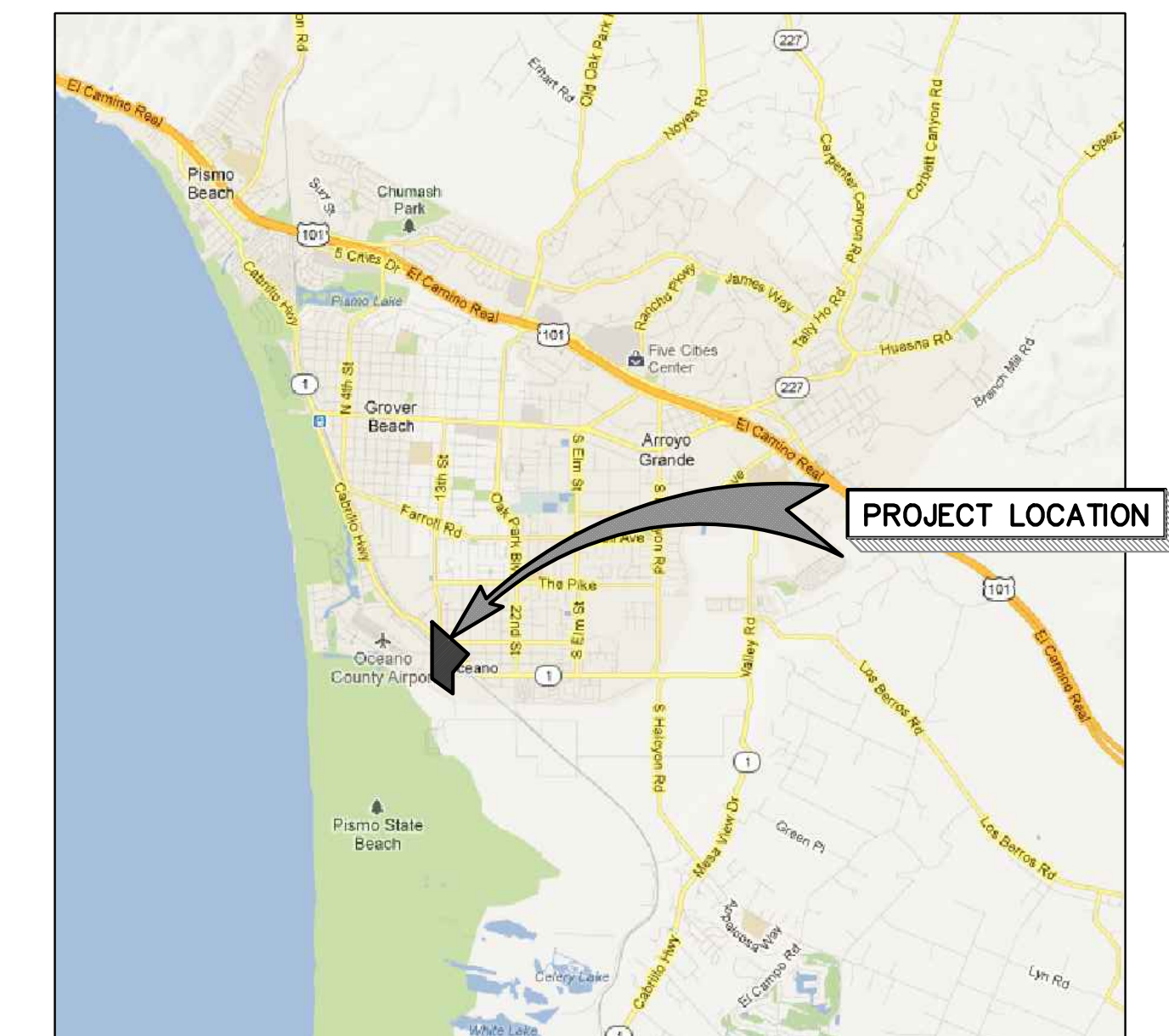
EXISTING	PROPOSED
PROPERTY LINE	---
RIGHT-OF-WAY	---
CURB	---
CURB & GUTTER	---
FENCE	X
DAYLIGHT LINE	---
EASEMENT	---
FLOWLINE	---
RETAINING WALL	---
SLOPE	---
CONTOURS	---
WATER MAIN	W
FIRE WATER LINE	FW
SANITARY SEWER LINE	SS
STORM DRAIN LINE	SD
GAS LINE	G
ELECTRIC LINE	E
OVERHEAD WIRES	OH
FIBER OPTICS	FO
TELEPHONE	T
UNDERGROUND TELEPHONE	UT
JOINT TRENCH	JT
TYPICAL LATERALS	XX
WATER VALVE	⊕
WATER METER	⊕
GAS METER	⊕
FIRE HYDRANT	⊕
STREET LAMP	⊕
STREET LIGHT	⊕
PG&E BOX	⊕
TRANSFORMER	⊕
MONUMENT	⊕
STORM DRAIN INLET	⊕
CURB INLET	⊕
FIRE DEPARTMENT CONNECTION	⊕
POWER POLE	⊕
FOUR-WAY SIGN	⊕
TWO-WAY SIGN	⊕
CLEANOUT	⊕
SDMH	⊕
SSMH	⊕
AIR RELEASE VALVE	⊕
ASPHALT CONCRETE	ARV
BEGIN CURB RETURN	BCR
BEGIN CURVE	BC
BEGIN VERTICAL CURVE	BVC
CATCH BASIN	CB
CENTERLINE	CL
END CURB RETURN	ECR
END CURVE	EC
END VERTICAL CURVE	EVC
FINISHED GRADE	FG
FINISHED SURFACE	FS
FINISH FLOOR	FF
FIRE DEPARTMENT CONNECTION	FDC
FLOW LINE	FL
GRADE BREAK	GB
HIGH POINT	HP
INVERT	INV
OUTSIDE GRADE	OG
POINT OF CONNECTION	POC
POINT OF REVERSE CURVE	PRC
POINT OF REVERSE VERTICAL CURVE	PRVC
PROPERTY LINE	PL
PUBLIC UTILITY EASEMENT	PUE
RIGHT-OF-WAY	ROW
TOP OF BERM	TB
TOP OF CURB	TC
TOP OF FOOTING	TF
TOP OF GRATE	TG
TOP OF WALL	TW
AC PAVING	---
CONCRETE	---



**LOCATION MAP**  
SCALE HORIZ 1"=300'

### SECTION AND DETAIL NUMBERING SYSTEM

- SECTION CUT ON DRAWING SHEET X.
- ON SHEET X, THIS SECTION IS IDENTIFIED AS SWALE SECTION SHEET X.
- DETAILS ARE CROSS-REFERENCED IN A SIMILAR MANNER, EXCEPT THAT DETAILS ARE IDENTIFIED BY NUMBER RATHER THAN LETTER.



**VICINITY MAP**  
NTS

### SURVEY NOTES:

- FOR COMPLETE PROJECT CONTROL DATA, SEE THE SURVEY RECORDS ON FILE IN THE SURVEYS DEPARTMENT AT THE DISTRICT OFFICE.
- BASIS OF BEARINGS AND COORDINATES:  
BEARINGS AND COORDINATES FOR THIS PROJECT ARE BASED ON THE CALIFORNIA STATE COORDINATE SYSTEM, ZONE 5, EPOCH DATE 1991.35, AT NGS MONUMENT "HPGN CA 05 05", PID# FV2048, SAN LUIS OBISPO COUNTY, CALIFORNIA.
- BASIS OF ELEVATION:  
ELEVATIONS FOR THIS PROJECT ARE BASED ON NGS MONUMENT X 532, PID# FV0421, SAN LUIS OBISPO COUNTY, CALIFORNIA, HAVING A NAVD88 PUBLISHED ELEVATION OF 13.5 FEET.
- IN THE EVENT GPS MACHINE CONTROL/GUIDANCE IS USED FOR THIS PROJECT, THE CONTRACTOR SHALL CONTACT AND MEET WITH THE SURVEYS DEPARTMENT AT THE DISTRICT OFFICE TO OBTAIN THE CONTROL NECESSARY TO ESTABLISH A PROJECT CALIBRATION COMPATIBLE FOR ALL USERS.

### BOUNDARY DISCLAIMER

THIS SURVEY WAS COMPILED FOR TOPOGRAPHIC PURPOSES ONLY. THE BOUNDARY INFORMATION SHOWN HEREON IS INTENDED FOR ORIENTATION ONLY, AND SUCH IS NOT INFERRED OR IMPLIED TO BE A BOUNDARY SURVEY.

Note: Oceano Community Services District (OCSD) approves the proposed modifications of their sewer and water systems as shown on this project's drawings and specifications. OCSD's review and approval does not include any other portions of this project.

APPROVED: FEBRUARY 5, 2018

*[Signature]*  
OCEANO COMMUNITY SERVICES DISTRICT, DISTRICT ENGINEER

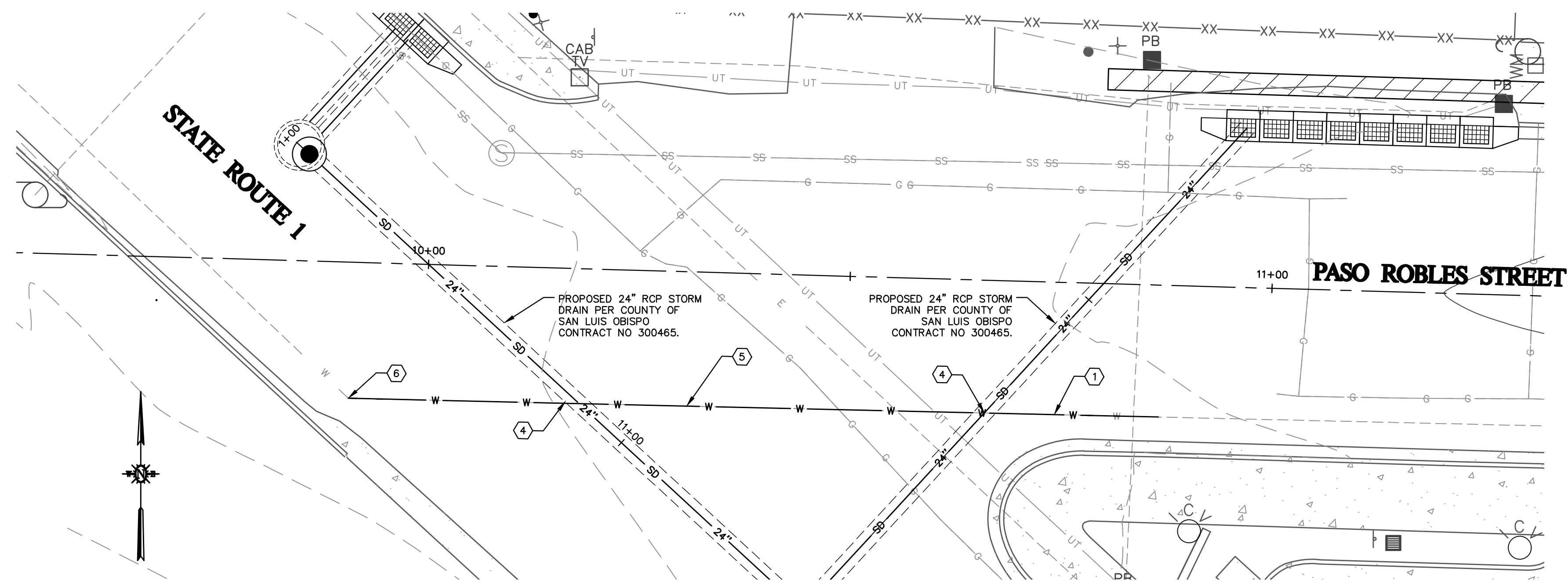


REV. NO.	DATE	REVISED	DESTROY ALL PRINTS BEARING EARLIER DATE	REV. BY	CKD. BY	APRD. BY

1050 Southwood Drive  
San Luis Obispo, CA 93401  
P 805.544.7407 F 805.544.3863

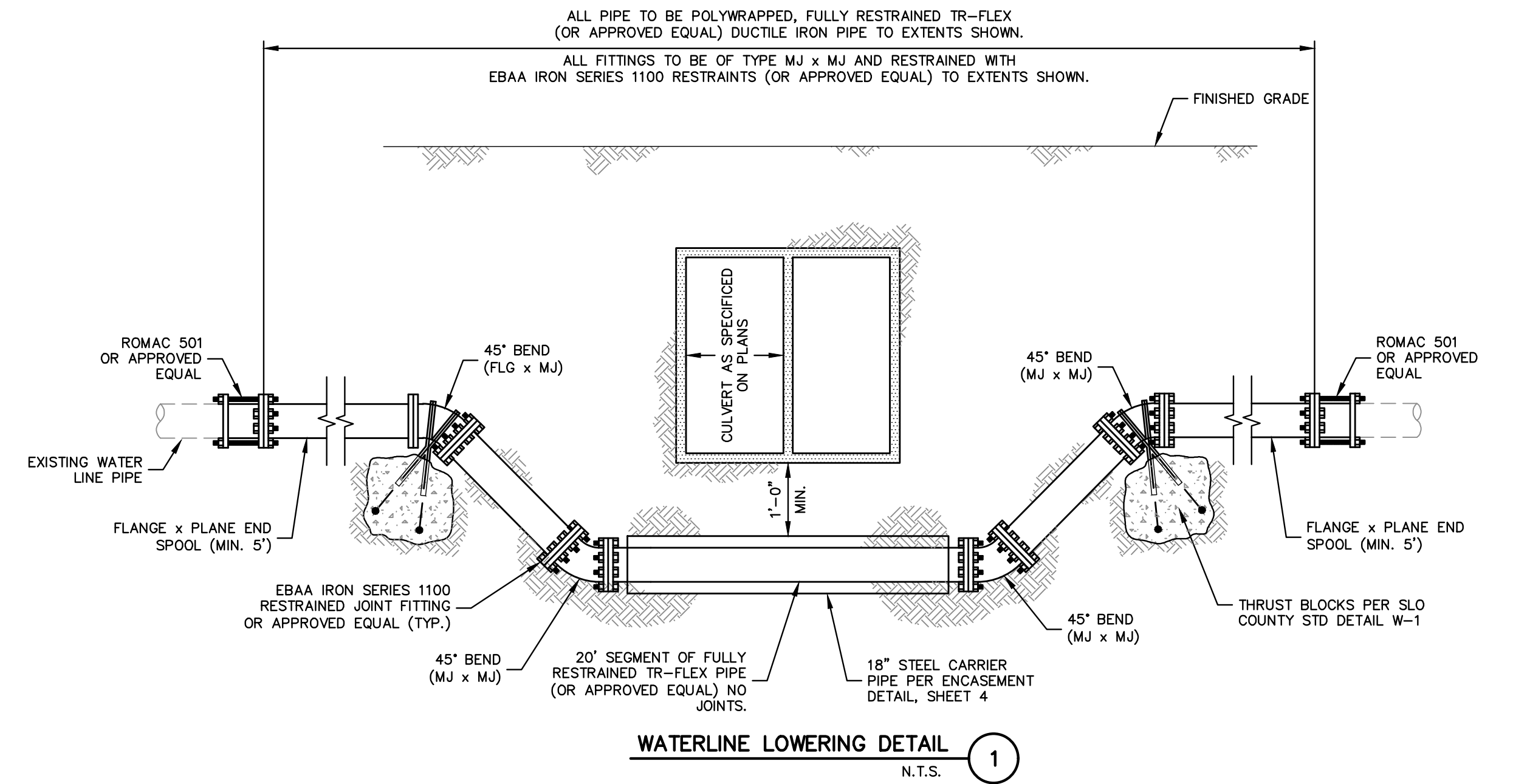
THESE DRAWINGS ARE INSTRUMENTS OF SERVICE AND ARE THE PROPERTY OF CANNON. ALL DESIGNS AND INFORMATION ON THESE DRAWINGS ARE FOR USE OF THE SPECIFIED PROJECT AND SHALL NOT BE USED OTHERWISE OR REPRODUCED WITHOUT THE EXPRESSED WRITTEN PERMISSION OF CANNON.

<b>OCEANO COMMUNITY SERVICES DISTRICT OCEANO DRAINAGE IMPROVEMENTS</b>		
<b>TITLE SHEET</b>		
OCEANO, CA		
DRAWN BY <b>KM</b>	DATE <b>01/19/2018</b>	CA JOB NO. <b>170828</b>
CHECKED BY	SCALE <b>AS SHOWN</b>	SHEET <b>1 OF 4</b>



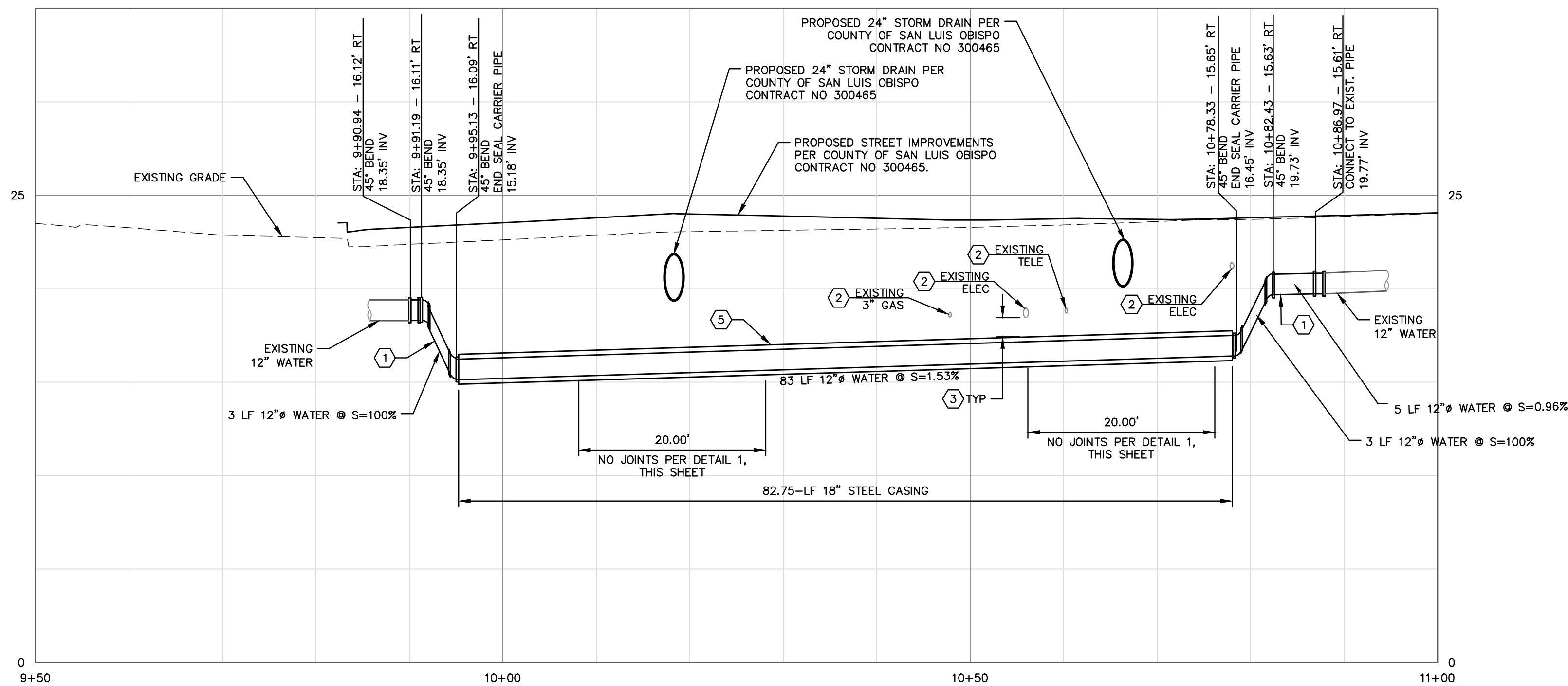
PASO ROBLES STREET – PLAN VIEW

SCALE HORIZ 1"=10'



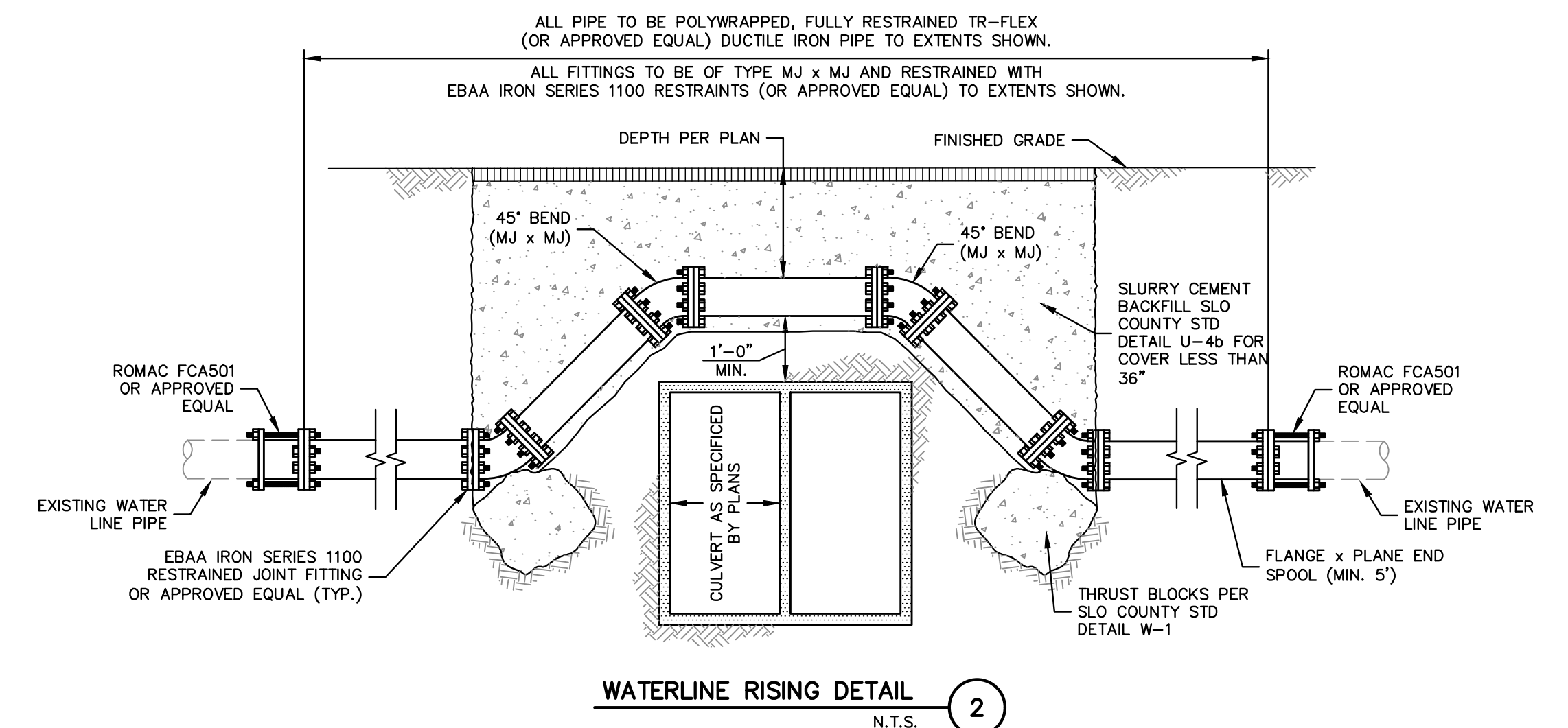
WATERLINE LOWERING DETAIL

N.T.S. 1



PASO ROBLES STREET – PROFILE VIEW

SCALE: HORIZ 1"=10'; VERT 1"=5'



WATERLINE RISING DETAIL

N.T.S. 2

CONSTRUCTION NOTES

- 1 INSTALL 12" DIP (TR-FLEX OR APPROVED EQUAL) WATER LINE PER SAN LUIS OBISPO COUNTY DETAIL U-4.
- 2 ASSUMED RELOCATED UTILITIES. CONTRACTOR TO VERIFY PRIOR TO START OF WORK.
- 3 KEEP 1 FT MINIMUM SEPARATION FROM EXISTING AND PROPOSED UTILITIES AT ALL CROSSINGS.
- 4 UNDER CROSSING PER WATERLINE LOWERING DETAIL 1, THIS SHEET.
- 5 INSTALL 12" DIP (TR-FLEX OR APPROVED EQUAL) WATER LINE WITH 18" STEEL CASING PER ENCASUREMENT DETAIL SHEET 4.
- 6 INSTALL 12" 45° (MJ x FLG) HORIZONTAL BEND.



REV. NO	DATE	REVISED	DESTROY ALL PRINTS BEARING EARLIER DATE	REV. BY	CKD. BY	APRD BY

1050 Southwood Drive  
San Luis Obispo, CA 93401  
P 805.544.7407 F 805.544.3863

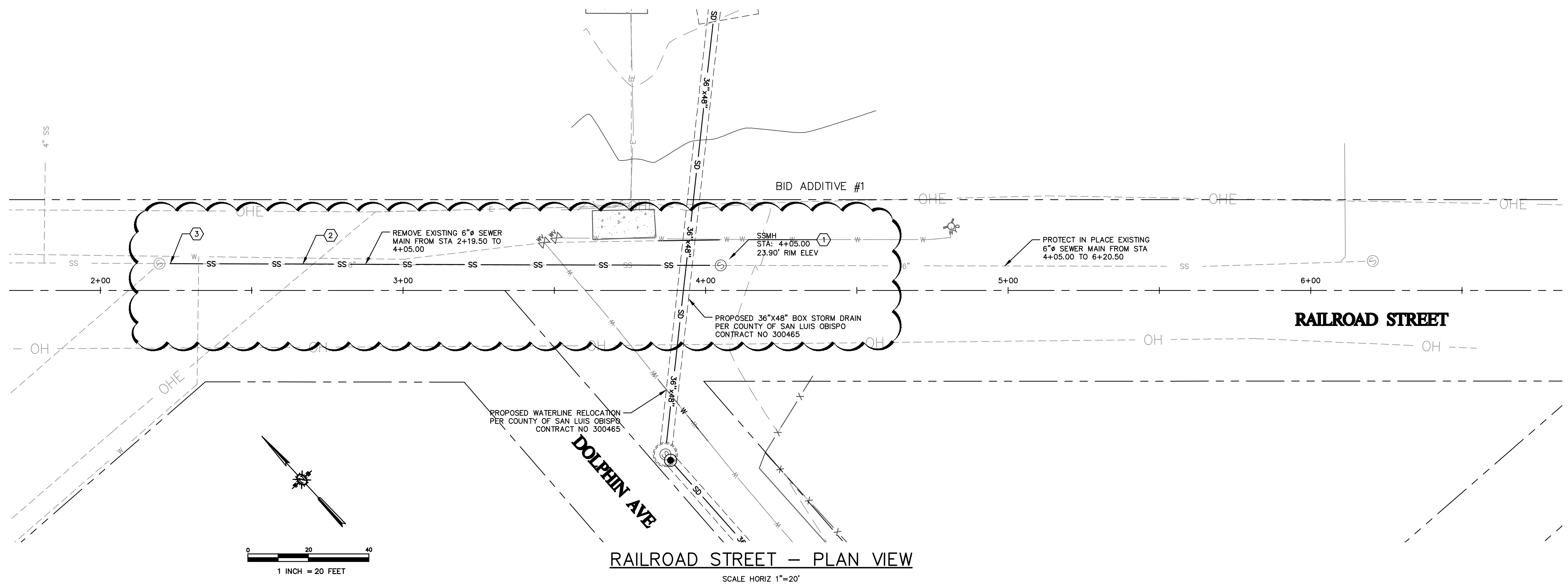
THESE DRAWINGS ARE INSTRUMENTS OF SERVICE AND ARE THE PROPERTY OF CANNON. ALL DESIGN AND INFORMATION ON THESE DRAWINGS ARE FOR USE OF THE SPECIFIED PROJECT AND SHALL NOT BE USED OTHERWISE OR REPRODUCED WITHOUT THE EXPRESSED WRITTEN PERMISSION OF CANNON.

OCEANO COMMUNITY SERVICES DISTRICT OCEANO DRAINAGE IMPROVEMENTS		
PLAN AND PROFILE		
OCEANO, CA		
DRAWN BY KM	DATE 01/19/2018	CA JOB NO. 170828
CHECKED BY	SCALE AS SHOWN	SHEET 2 OF 4

F:\proj\2017\170828\4 Production and Drafting\Const Dwg\Civil\170828PP001.dwg 1-19-18 10:01:39 AM shonem

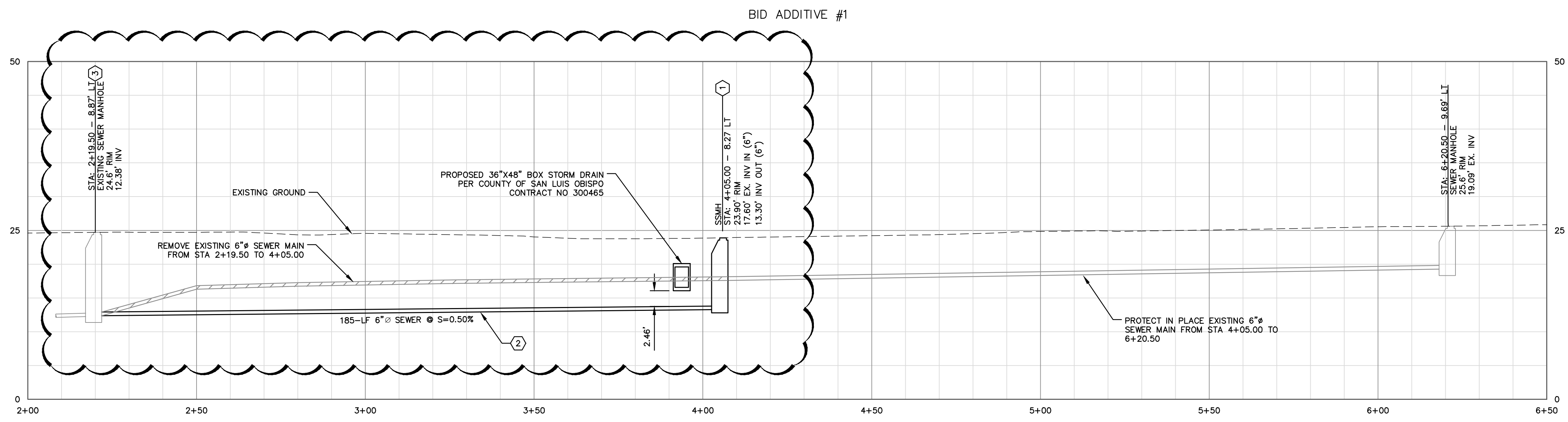
**CONSTRUCTION NOTES**

- ① INSTALL SEWER DROP MANHOLE PER SAN LUIS OBISPO COUNTY DETAIL S-1a, SHEET 4.
- ② INSTALL 6" SDR 35 SEWER MAIN PER SAN LUIS OBISPO COUNTY DETAIL U-4, SHEET 4.
- ③ CONNECT TO EXISTING SEWER MANHOLE.



**RAILROAD STREET - PLAN VIEW**

SCALE HORIZ 1"=20'



**RAILROAD STREET - PROFILE VIEW**

SCALE: HORIZ 1"=20'; VERT 1"=10'

F:\proj\2017\170828\4 Production and Drafting\Const Dwg\Civil\170828PRP0002.dwg 1-19-18 10:01:59 AM shonem

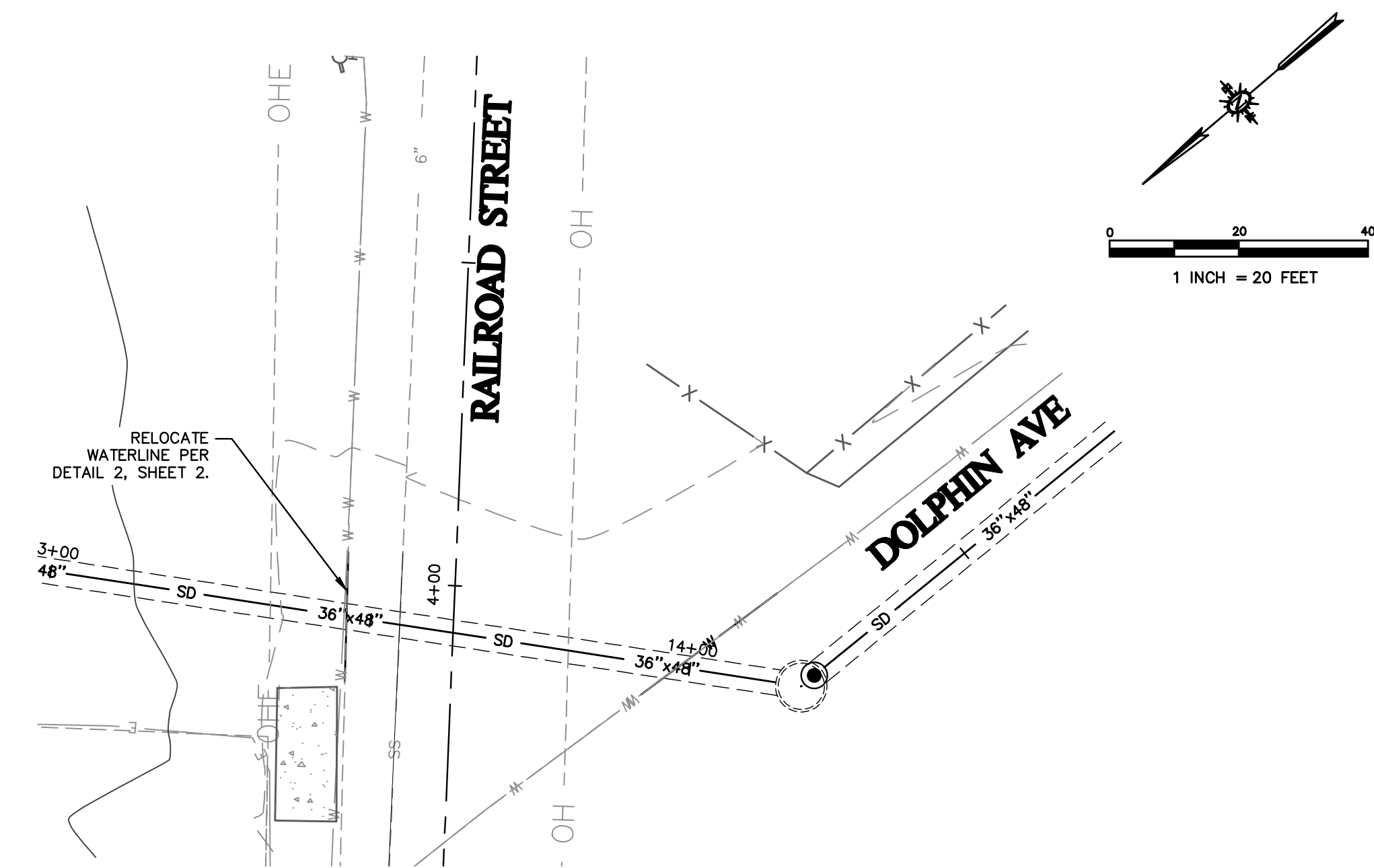
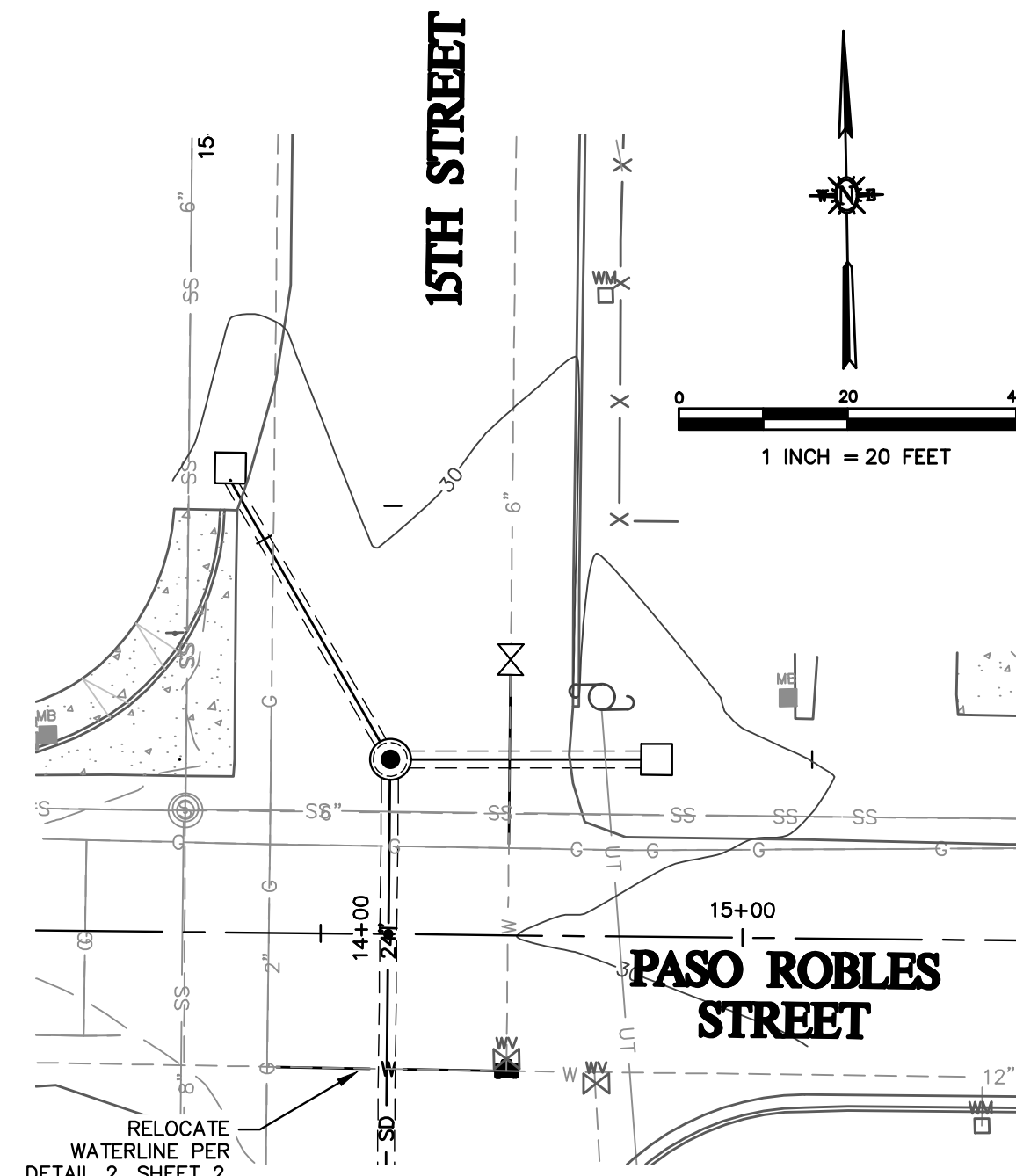
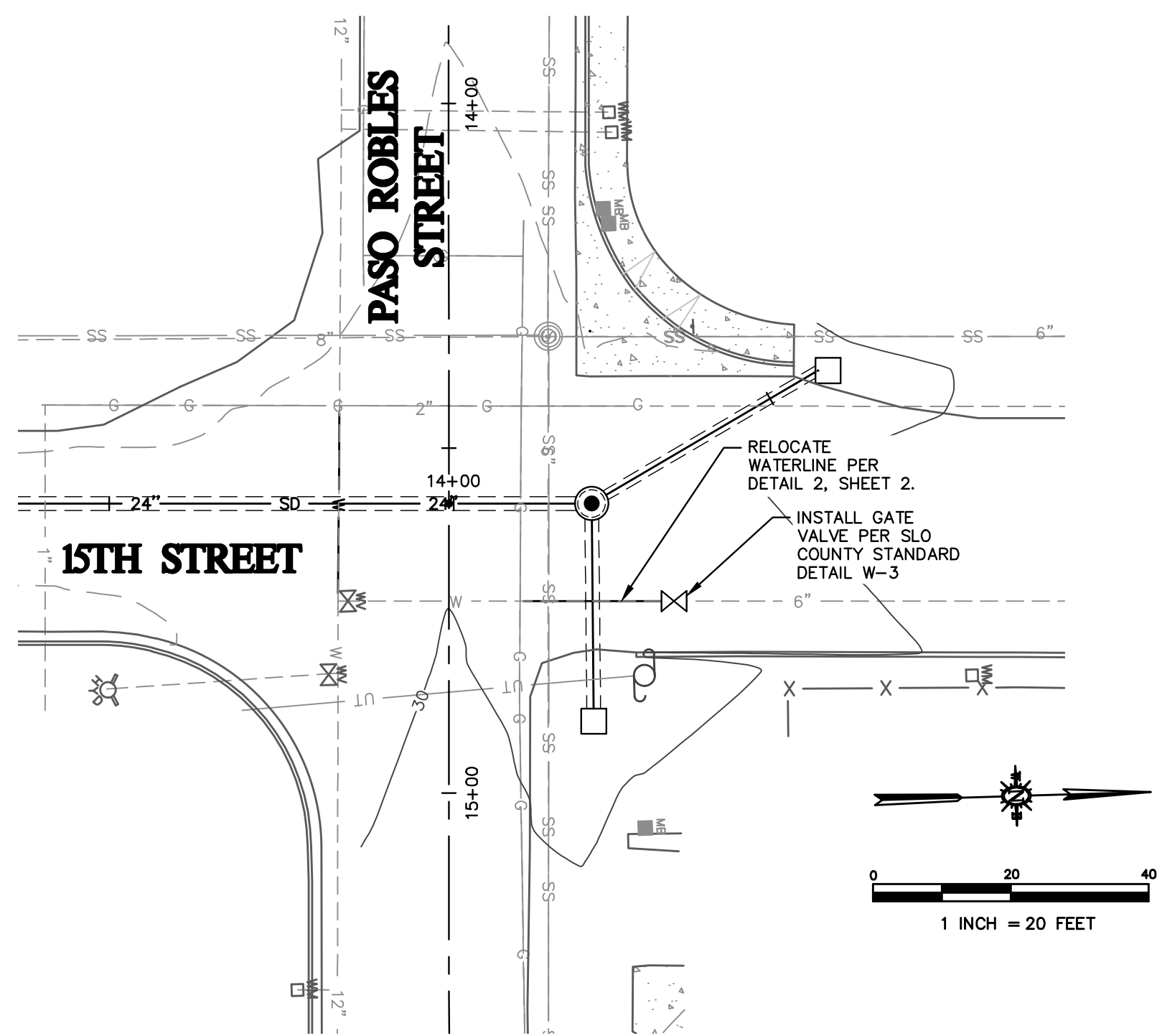


REV. NO	DATE	REVISED	DESTROY ALL PRINTS BEARING EARLIER DATE	REV. BY	CKD. BY	APRD BY

1050 Southwood Drive  
San Luis Obispo, CA 93401  
P 805.544.7407 F 805.544.3863

THESE DRAWINGS ARE INSTRUMENTS OF SERVICE AND ARE THE PROPERTY OF CANNON. ALL DESIGN AND INFORMATION ON THESE DRAWINGS ARE FOR USE OF THE SPECIFIED PROJECT AND SHALL NOT BE USED OTHERWISE OR REPRODUCED WITHOUT THE EXPRESSED WRITTEN PERMISSION OF CANNON.

<b>OCEANO COMMUNITY SERVICES DISTRICT OCEANO DRAINAGE IMPROVEMENTS PLAN AND PROFILE OCEANO, CA</b>		
DRAWN BY KM	DATE 01/19/2018	CA JOB NO. 170828
CHECKED BY	SCALE AS SHOWN	SHEET 3 OF 4



15TH STREET WATERLINE RELOCATION – PLAN VIEW

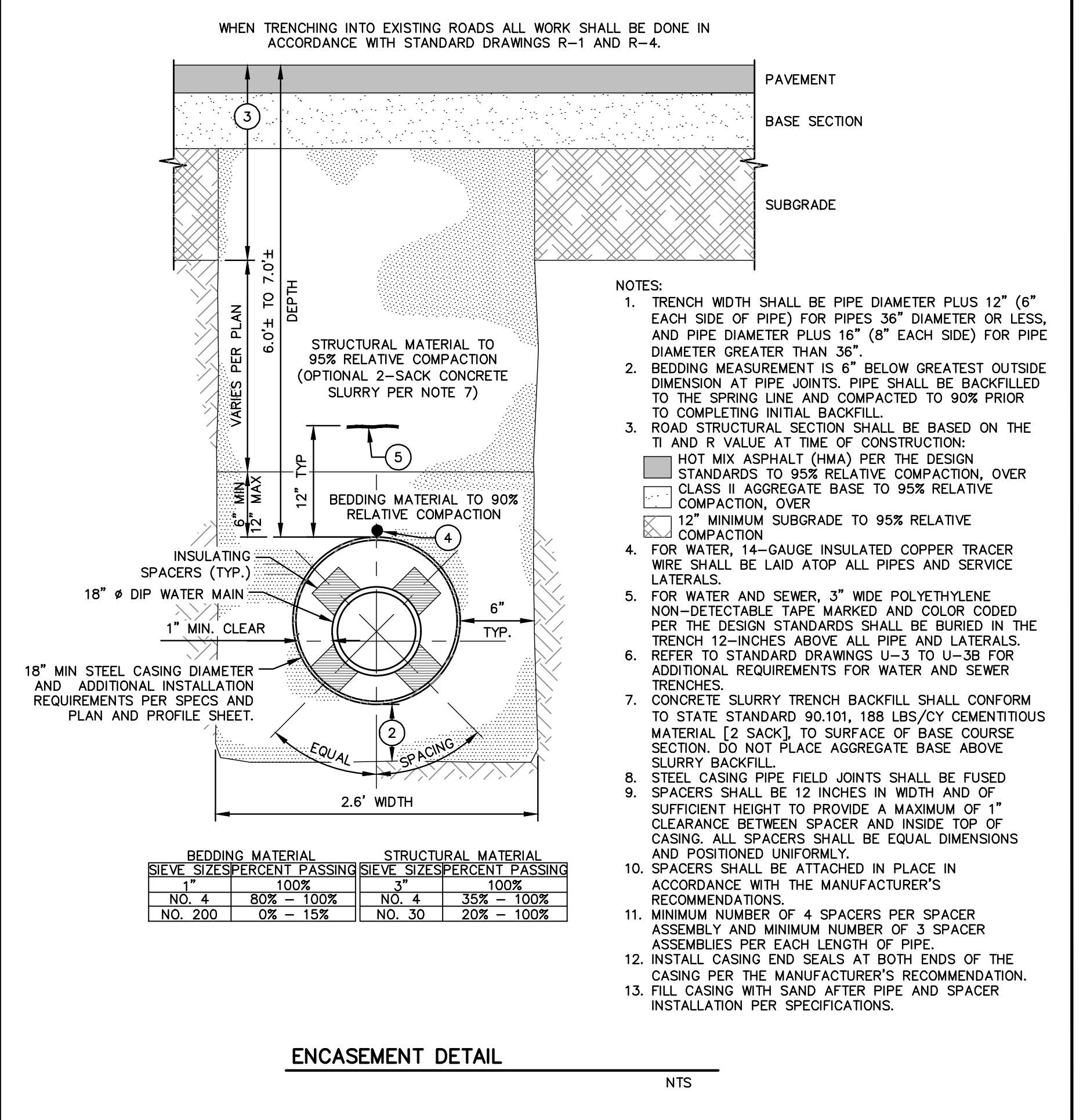
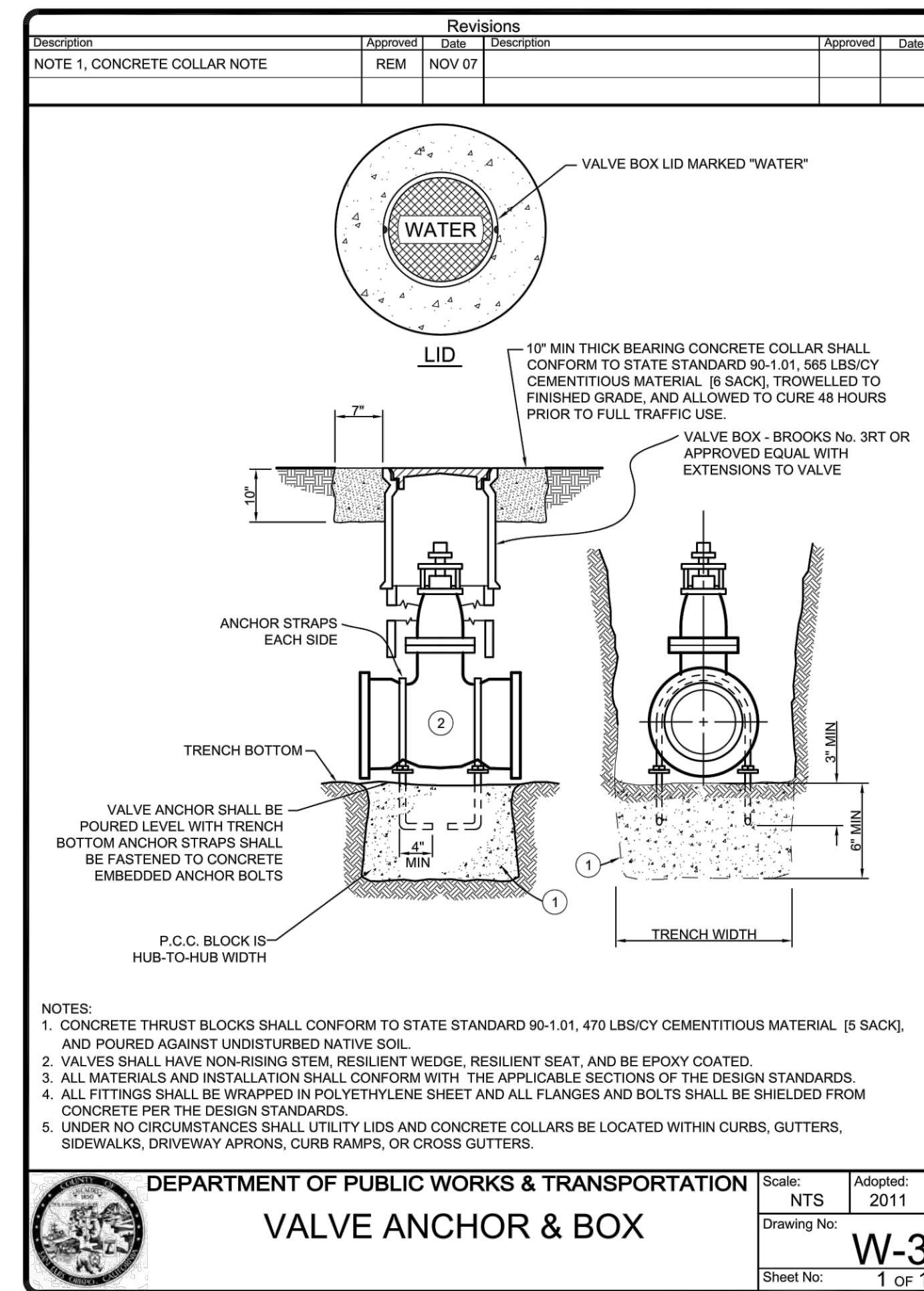
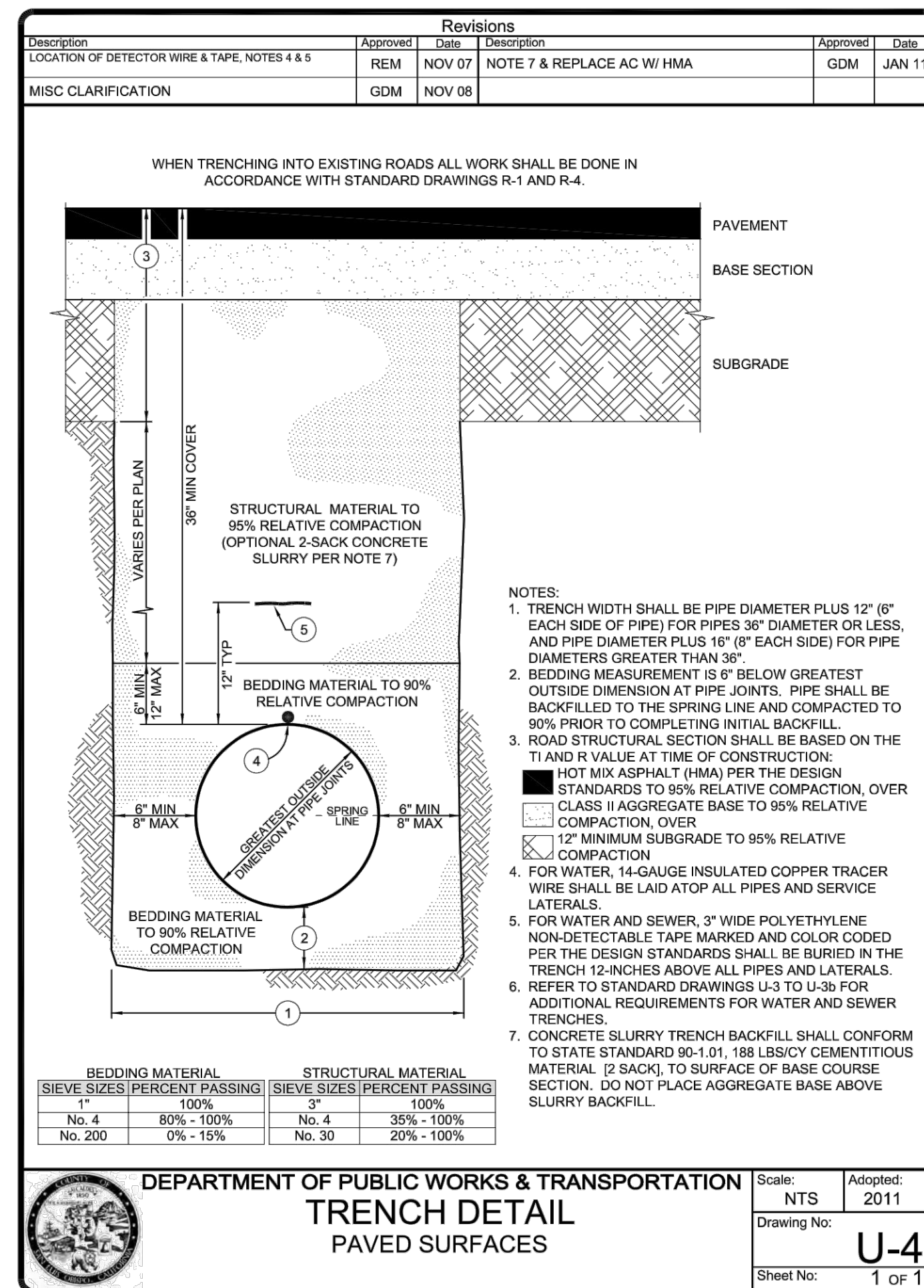
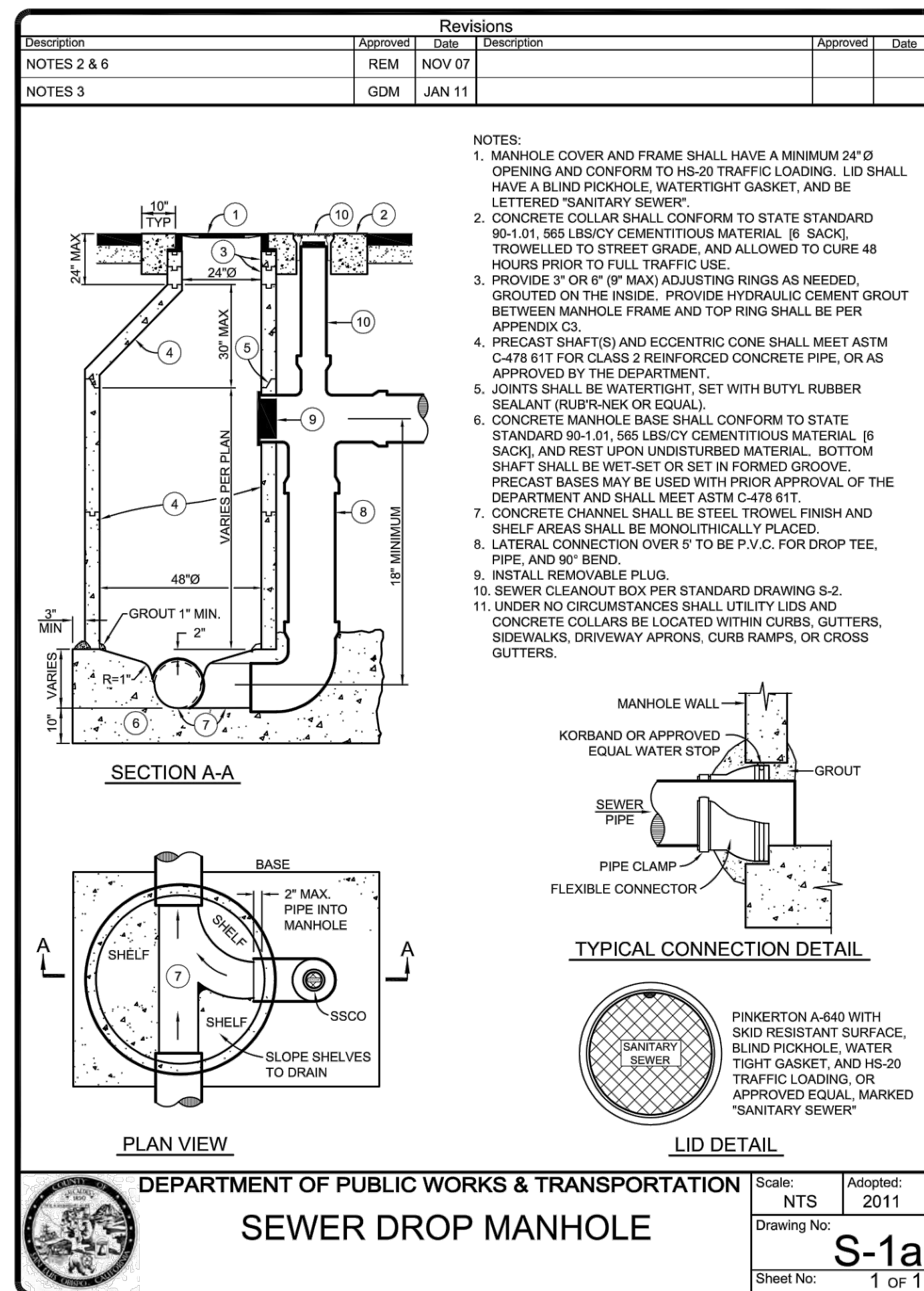
PASO ROBLES STREET WATERLINE RELOCATION – PLAN VIEW

RAILROAD STREET WATERLINE RELOCATION – PLAN VIEW

SCALE HORIZ 1"=20'

SCALE HORIZ 1"=20'

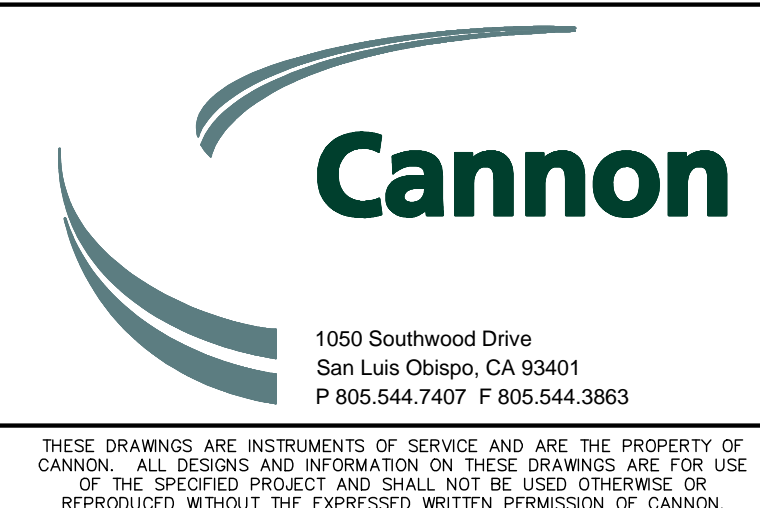
SCALE HORIZ 1"=20'



F:\proj\2017\170828\4 Production and Drafting\Const\_Dwg\Civil\170828P003.dwg 1-19-18 10:02:14 AM shonem



REV. NO.	DATE	REVISED	DESTROY ALL PRINTS BEARING EARLIER DATE	REV. BY	CKD. BY	APPR. BY



OCEANO COMMUNITY SERVICES DISTRICT OCEANO DRAINAGE IMPROVEMENTS			
RELOCATIONS OCEANO, CA			
DRAWN BY KM	DATE 01/19/2018	CA JOB NO. 170828	
CHECKED BY	SCALE AS SHOWN	SHEET 4 OF 4	